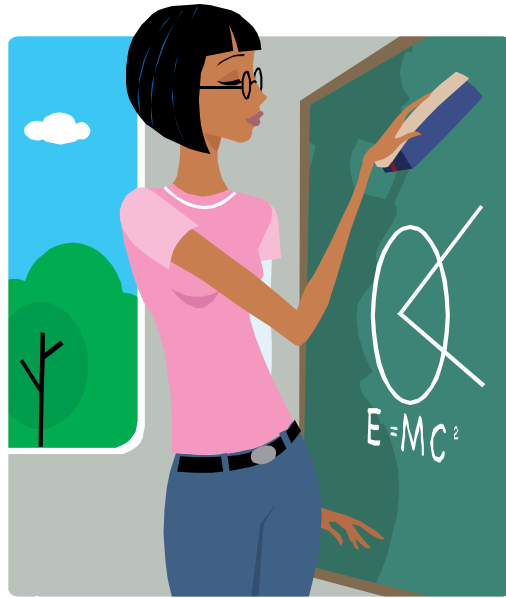


Math CMT Practice Packet #2



Grade 8

Bridgeport Public Schools

5. The receptionist at a veterinary clinic reviewed the office records and found that 3 out of every 8 animals treated at the clinic during the last 4 months were cats. At this rate, how many cats will be treated during the next 2 weeks if a total of 288 animals are treated?

- A. 108 B. 96 C. 36 D. 24

6. If $x = (-2)^3$, which expression is equal to $(-2)^9$?

- A. x^3 B. x^6 C. x^{12} D. x^{27}

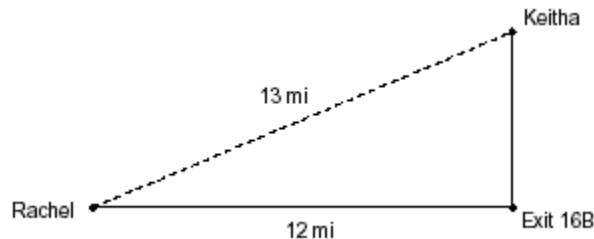
7. Debra has a box containing 7 green gum balls and 3 blue gum balls. What is the probability that Debra will draw a green gum ball at random, keep it, and then draw a blue gum ball?

- A. $\frac{1}{10}$ B. $\frac{21}{100}$ C. $\frac{7}{30}$ D. $\frac{3}{7}$

8. Meredith has a recipe for 3 quarts of relish that calls for $1\frac{1}{2}$ cups of chopped onion. She wants to make 1 gallon of the relish. Which proportion can be used to find c , the number of cups of chopped onion that she should use?

- A. $\frac{3}{1.5} = \frac{c}{4}$ B. $\frac{c}{3} = \frac{c+1.5}{4}$ C. $\frac{1.5}{3} = \frac{c}{4}$ D. $\frac{1.5}{c} = \frac{4}{3}$

9. Rachel's house is 12 miles due west of Highway Exit 16B. Keitha's house is due north of the same exit. The 2 houses are 13 miles apart. What is the shortest distance from Keitha's house to Exit 16B?



- A. 11 mi. B. 10 mi. C. 7 mi. D. 5 mi.

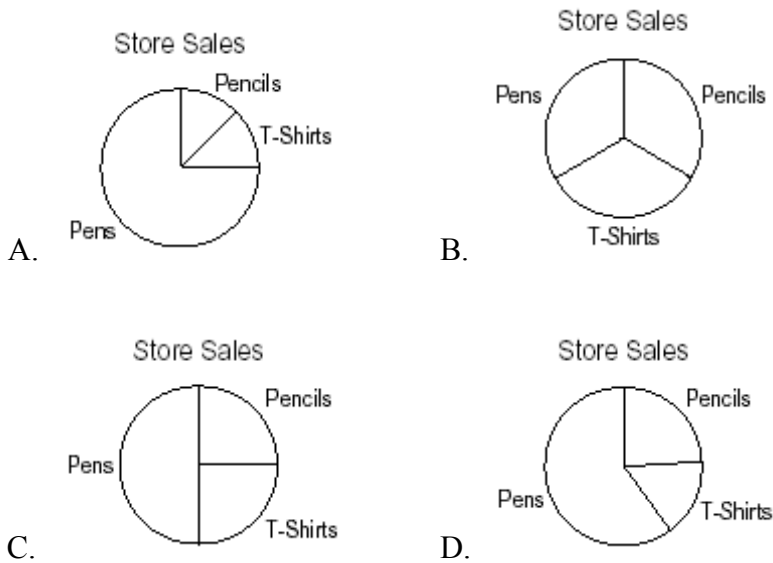
10. An airplane was flying at an altitude of 10,800 feet. During a descent the plane's altitude changed -277 feet per minute. What was the total change in the plane's altitude in 12 minutes of descent?

- A. -3224 ft. B. -3214 ft. C. -3324 ft. D. -7476 ft.

11. Derek collected data about the sales at the school store for 1 week. The graph shows these data.



Which graph best represents the same information organized into types of item sold?



12. Olivia cut a wooden board into 3 equal parts. If the board was originally $8\frac{1}{4}$ feet long, how long was each of the 3 parts?

- A. $1\frac{1}{12}$ ft. B. $2\frac{3}{4}$ ft. C. $5\frac{1}{4}$ ft. D. $9\frac{3}{4}$ ft.

17. Karen uses 4 flowers to make 1 corsage. When she began making corsages, she had a total of 52 flowers. Which equation shows f , the number of flowers remaining after she made c corsages?

- A. $f = 52 - 4c$ B. $f = 52 - \frac{c}{4}$ C. $f = \frac{4c}{52}$ D. $f = \frac{52}{4c}$

18. A citywide election was set to take place in Granville in 2 weeks. The *Granville Gazette* ran an opinion poll asking Granville residents to indicate their position on Propositions 1, 2, and 3. There were 500 responses to the poll. The chart lists the results.

	In Favor	Opposed
Proposition 1	424	76
Proposition 2	226	234
Proposition 3	275	225

Based on these results, which is the best prediction of the number of voters opposed to Proposition 3 out of the total number of 10,000 voters in the citywide election?

- A. 1,220 B. 4,500 C. 4,900 D. 8,480

19. A bag of mixed Yummy Gummies contains 26% green, 34% red, 24% blue, and 16% yellow gummies. Carla put 250 mixed gummies in a bowl. Which proportion can be used to find y , the total number of yellow gummies in the bowl?

- A. $\frac{250}{y} = \frac{16}{100}$ B. $\frac{16}{100} = \frac{y}{250}$ C. $\frac{100}{250} = \frac{y}{16}$ D. $\frac{16}{100} = \frac{150}{y}$

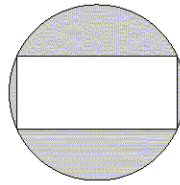
20. The Stars, the Tigers, and the Lobos scored a total of 56 goals during the hockey season. The Stars scored 4 more goals than the Tigers, and the Lobos scored twice as many goals as the Tigers. Which is a reasonable conclusion about the goals the teams scored?

- A. The Stars scored the least number of goals.
B. The Stars and the Lobos scored an equal number of goals.
C. The Tigers scored exactly half the total goals.
D. The Lobos scored the greatest number of goals.

21. A bicycle wheel travels about 82 inches in 1 full rotation. What is the diameter of the wheel, to the nearest inch?

- A. 5 in. B. 10 in. C. 13 in. D. 26 in.

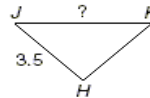
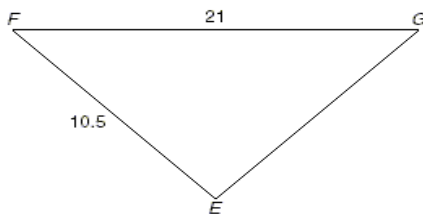
22. The figure shows a rectangle inside a circle.



Which procedure should be used to find the area of the shaded dark region?

- A. Find the area of the circle and then subtract the area of the rectangle.
- B. Find the circumference of the circle and then subtract the area of the rectangle.
- C. Find the area of the rectangle and then subtract the perimeter of the rectangle.
- D. Find the circumference of the circle and then subtract the perimeter of the rectangle.

23. Triangle EFG is similar to Triangle HJK.



Find the length of \overline{JK} .

- A. 3 units
- B. 7 units
- C. 14 units
- D. 24.5 units

24. Ms. Gonzalez's monthly electricity bills for March through June were \$97.09, \$103.96, \$114.73, and \$121.82. She estimated that the electricity cost a total of \$400.00 over these 4 months. Which best describes her estimate?

- A. Less than the actual amount because she rounded to the nearest \$100.
- B. Less than the actual amount because she rounded to the nearest \$10.
- C. More than the actual amount because she rounded to the nearest \$100.
- D. More than the actual amount because she rounded to the nearest \$10.

25. The following table shows the number of pages in novels that Chloe read for pleasure each month during the school year.

Chloe's Novel Reading

Month	Sept.	Oct.	Nov.	Dec.	Jan.	Feb.	March	April
Number of Pages Read	370	393	380	376	396	372	385	391

If Chloe read only 125 pages during the month of May, which measure of data changed the most?

- A. The mean
- B. The median
- C. The mode
- D. All affected equally